

指定 公差 General Tolerance	角度公差 ±[°] Angular tolerance ±[°]			寸法公差 ±[mm] Dimensional tolerance ±[mm]						
	短辺 長さ Length of short side	~	~100	6	30	120	300	1000		
	精 f	10	50	100	精 f	0.05	0.1	0.2	0.4	0.6
	中 m	1	0.5	0.3	0.1	中 m	0.1	0.3	0.5	0.7
粗 v	3	1.5	1	0.5	粗 c	0.3	0.5	1	1.2	2

図番 Drawing No.	CLK-001-W18	
改訂 Rev.	年月日 Date	改訂履歴 Revisions

A

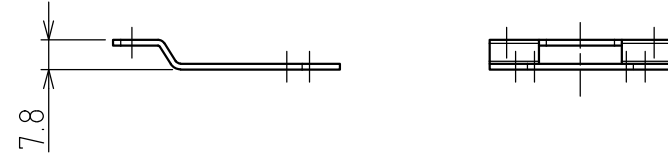
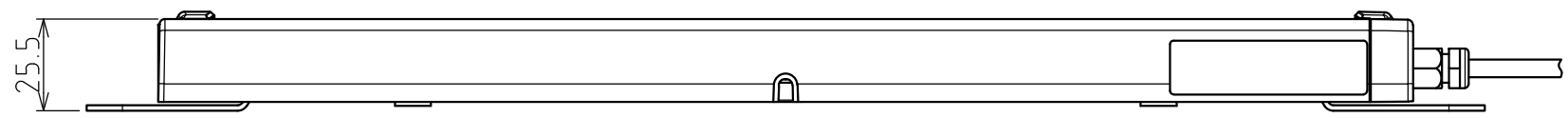
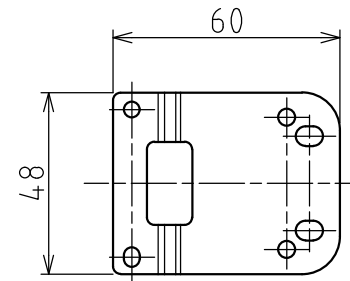
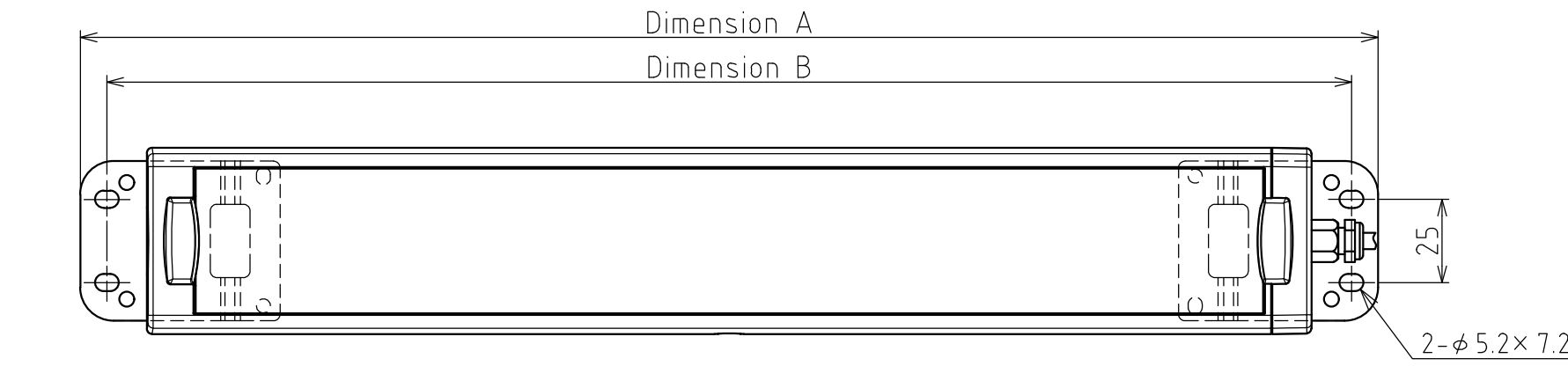
B

C

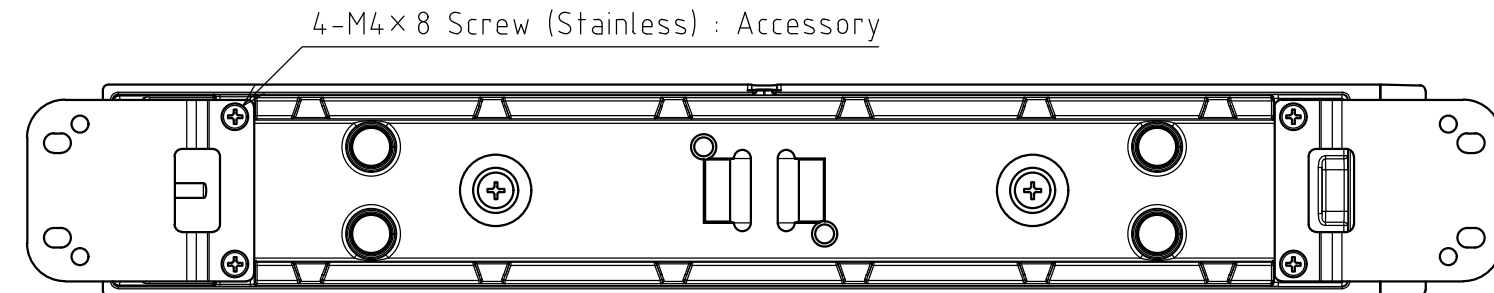
D

E

F



Individual Part Drawing



Installation Example Figure
(CLK3S-24(A)AG-CD/CN)

[Table 1. Dimensions]

Model	Dimension A	Dimension B
	Full Length	Mounting Pitch
CLK2S-24(A)AG-□	290	274
CLK3S/C/CL-24(A)AG-□	390	374
CLK6S/C/CL-24(A)AG-□	690	674

[Specifications]

Model	CLK-001
Material	Stainless
Mass	28g (per piece)
Mounting Direction Mounting Location	Any Direction Indoor Only
Vibration Resistance	19.6 m/s ²
Operating Temperature Range	-40℃~+60℃ (90%RH or less, no condensation)
Corresponding Model	CLK-24(A)AG & CWK-24 (Body: Allminium Alloy, Lens: Tempered Glass) Series, Exclusive Use
Conformity Standards	There are no contents of controlled substances exceeding the threshold for the RoHS Directive.

番号 No.	部品名 Part Name	数量 Qty.	記事 Remarks		
機種 Model	CLK-001	特注No. S.P.No.	-		
図名 Name	SPECIFICATIONS				
品目コード Part No.	-	尺度 Scale	三角法 3rd Angle P.	単位 Unit mm	株式会社 パトライト PATLITE Corporation