

Drawing No.	Rev.	Page
GL7T-M1NC1-W18	B	1 / 4

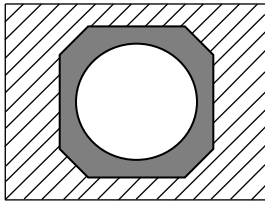

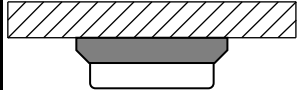
SPECIFICATIONS

Product Name: Flashing Beacon

Model: GL7T-M1NC1-T

Drawing No.	Rev.	Page
GL7T-M1NC1-W18	B	2/4

[1. General Specifications]

Model			GL7T-M1NC1-T		
Rated Voltage			12 - 24V DC		
Operating Voltage Range			10 - 32V DC		
Rated Current Consumption	12V DC	Typ.	0.17A (Red, Triple flash, High speed)		
		Max.	0.37A		
	24V DC	Typ.	0.09A (Red, Triple flash, High speed)		
		Max.	0.19A		
Rated Power Consumption		Max.	4.6W		
Operating Ambient Temperature			-40°C to +85°C		
Operating Ambient Humidity			90% RH or less (No condensation)		
Storage Ambient Temperature			-40°C to +85°C		
Storage Ambient Humidity			90% RH or less (No condensation)		
Mounting Location			Indoor/Outdoor (Construction equipment allowed)		
Mounting Direction			<div>Upright</div> 	<div>Upward</div> 	<div>Downward</div>  <div>Only Indoor</div>
Protection Rating			IP6X, IPX6 (IEC 60529), IPX9K (ISO 20653)		
Environmental Condition			Upright / Upward		
Vibration Resistance			110m/s ² (JIS D 1601:1995)		
Impact Resistance			1,000m/s ² , 11ms (IEC60068-2-27:2008)		
Communication Specification			CAN		
Communication Protocol			SAE J1939		
Baud Rate			250kbps, 500kbps (auto detection)		
Source Address			183 (default)		
Terminating Resistor			None		
Mass (Tolerance ±10%)			0.14kg (Without accessories)		
Outer Dimensions			Refer to "Outer Dimension Drawing"		
Conformity Standards			EN ISO 13766-1 EN IEC 63000 ECE R10.06 FCC Part15 SubpartB ClassA ICES-003 Class A		
Remarks			<div>• Conforms to the CE requirements.</div> <div>• Conforms to the UKCA requirements.</div> <div>• Due to the characteristics of the LED elements, there may be a slight variation in color tone and brightness between products.</div> <div>• The flash patterns "Red Luminescence, Triple flash (High speed)", "Amber Luminescence, Double flash (High speed)", and "Green Luminescence, Single flash (High speed)" meet SAE J595 Class 3.</div>		

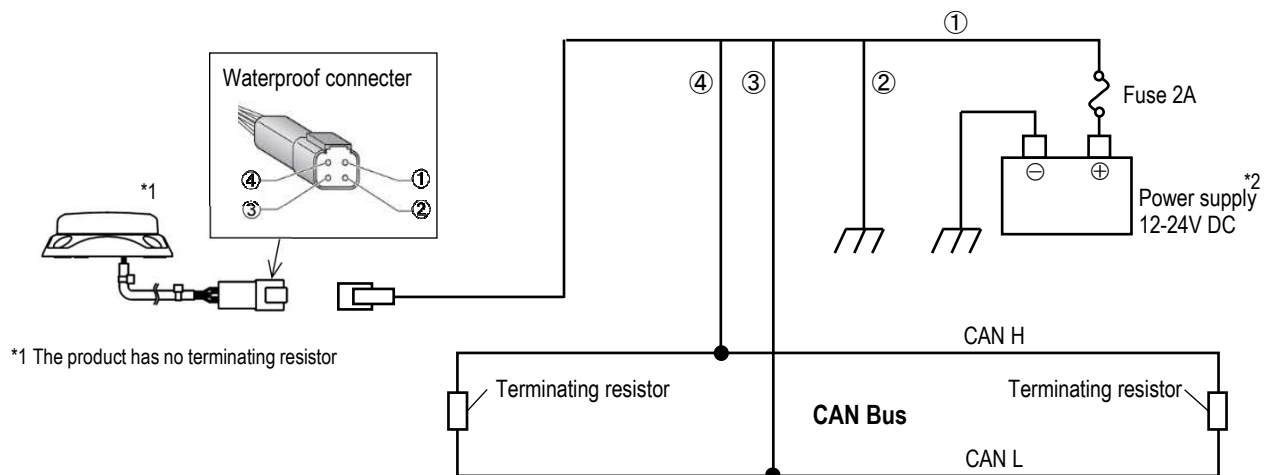
[2. Model]

GL7T-M1NC1-T

[3. Operating Specifications]

Flash pattern	Luminous color	Number of flashes	Brightness adjustment
Single flash	Red, Amber, Green	31 flashies per minute (Low speed), 63 flashes per minute (Medium speed), 125 flashes per minute (High speed)	4 steps
Double flash		31 flashies per minute (Low speed), 63 flashes per minute (Medium speed), 125 flashes per minute (High speed)	
Triple flash		31 flashies per minute (Low speed), 63 flashes per minute (Medium speed), 125 flashes per minute (High speed)	
Slow flash		31 flashies per minute (Low speed), 63 flashes per minute (Medium speed), 125 flashes per minute (High speed)	
Continuous		-	

[4. Wiring Example]



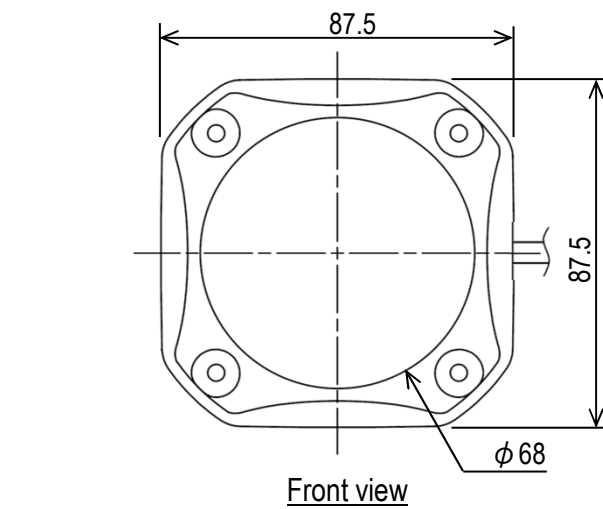
Waterproof connector specifications and Pinouts

Mfr.	Model No.	Pinout	
		No.	Function
TE Connectivity	DEUTSCH Connector DT04-4P-CE02 (Applicable connector type : DT06-4S-CE02)	①	Power input line
		②	Earth wire
		③	Comm. line CAN L
		④	Comm. line CAN H

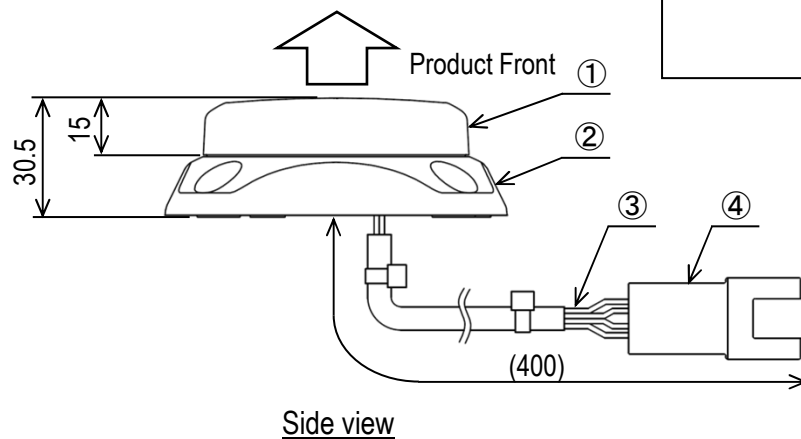
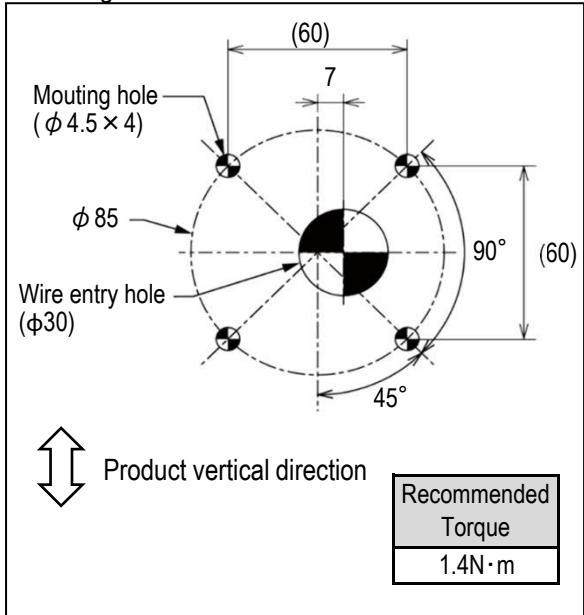
*2 If the battery is not used, connect the power input line to the power supply⊕ and the earth wire to the power supply⊖.

[5. Outer Dimension Drawing]

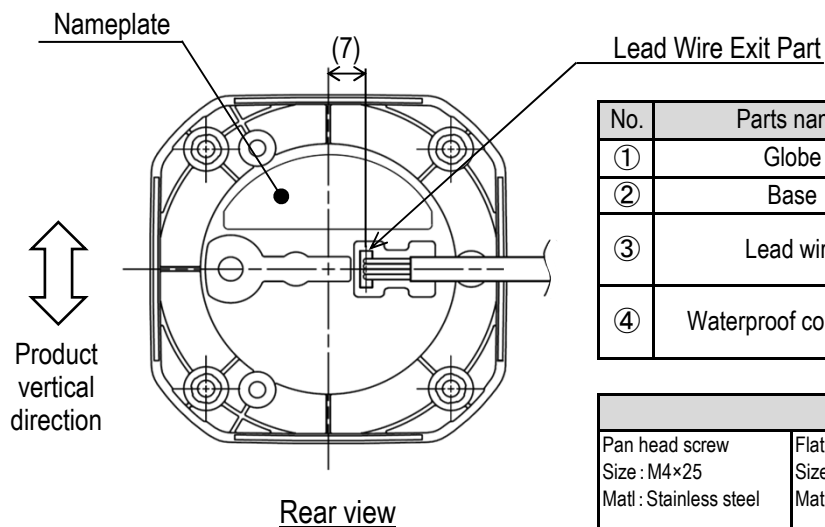
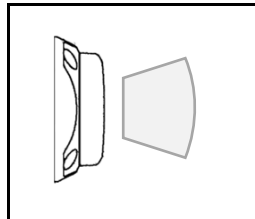
(Unit: mm)



【Mounting Dimensions】



【Luminous Direction】



No.	Parts name	Material
①	Globe	PC(Clear)
②	Base	PC
③	Lead wire	Conductor Wire Square 0.5mm ²
④	Waterproof connector	DEUTSCH Connector DT04-4P-CE02

Accessories		
Pan head screw Size : M4×25 Matl : Stainless steel	Flat washer Size : nominal dia. 4 Matl : Stainless steel	Hexagon nut * Size : M4 Matl : Stainless steel
4 pcs.	8 pcs.	4 pcs.

* This nut has alocking function.